

- > Port size: Ø 3, 4 and 6 mm O/D tube
- > Miniature Pneufit® M an ultra compact alternative where space is at a premium.
- > Releasable stainless-steel grab-ring to grip
- > PA or PUR tube (85 or 95 durometer).

- > Nickel plated brass components provide corrosion and contamination resistance and an extended life.
- > Pre applied thread sealant on all taper threads and recessed captive O-ring on parallel threads provides optimum rapid sealing.



### Technical features

**Medium:**

Compressed air

**Operating pressure:**

10 bar (145 psi) max.

**Vacuum:**

750 mmHg

**Tube sizes:**

3, 4, and 6 mm

**Thread sizes:**

M3, M5, M6, R1/8 and Rc1/8

**Tubing types:**

PA 11 or 12

PUR 85, 95 or 98 durometer

**Ambient/Media temperature:**

-20°C ... +60°C ( +32 ... +140°F)

**Materials:**

Body: PBT

Seals: NBR (VMQ free)

u-packing and O-rings

Threaded bodies: nickel plated brass

Backing ring: POM

Grab-ring: stainless steel

Collar: nickel plated brass

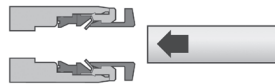
Thread sealant: Chemitech

G-175L

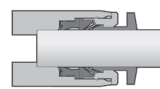
### Method of assembly



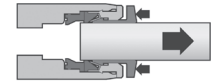
1. Ensure that the end of the tube is cut square and is free from burrs.



2. Push the tube through the collet into the fitting.

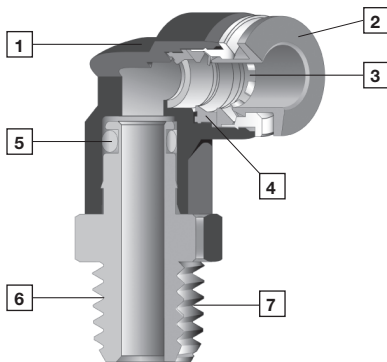


3. Continue pushing the tube through the 'O'-ring until it bottoms on the tube stop then pull back.



4. To disconnect push the tube into the fitting, hold down the collet and withdraw the tube.

### Components



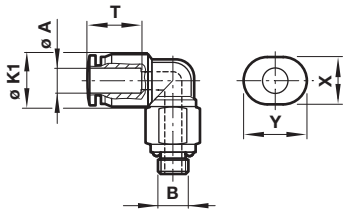
- 1 Impact resistant PBT body in grey
- 2 Release buttons are grey
- 3 Stainless steel grab ring with special design to retain softer tube and provide easy releasability.
- 4 Silicon free U-packing provides leak tight tube seal under side loading.
- 5 Stem seal provides leak tight 360° swivel connection.
- 6 Nickel plated brass threads
- 7 Pre-applied thread sealant on tapered threads and recessed captive O-ring on parallel threads.

### Option selector

M0 ★★★★★★



Typical dimensions



Ø A	Ø K1	T	X	Y
3	7,5	11,5	7	9
4	8,5	12	8	10,5
6	11	13	10	12,5

B	Recommended torque
M3	0,7 Nm
M5	1,5 Nm
M6	2,3 Nm
R1/8	7 Nm



Straight adaptors and connectors

<p><b>Straight union (equal)</b> M0020</p>  <p>Page 3</p>	<p><b>Straight union (unequal)</b> M0020</p>  <p>Page 3</p>	<p><b>Straight adaptor (external hex only)</b> M0125/M0225</p>  <p>Page 3</p>	<p><b>Straight adaptor (internal hex only)</b> M012A/M022A</p>  <p>Page 3</p>	<p><b>Straight adaptor</b> M0126/M0226</p>  <p>Page 3</p>
---	--	--	--	--

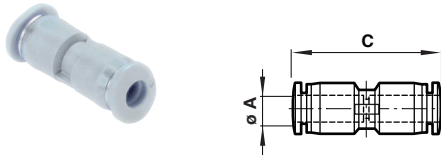
Elbow adaptors and connectors

<p><b>Union elbow</b> M0040</p>  <p>Page 3</p>	<p><b>90° Swivel elbow adaptor</b> M0147/M0247</p>  <p>Page 3</p>	<p><b>Union tee</b> M0060</p>  <p>Page 5</p>	<p><b>Swivel tee adaptor</b> M0167/M0267</p>  <p>Page 5</p>	<p><b>Swivel side tee adaptor</b> M0168/M0268</p>  <p>Page 5</p>
--	--	---	---	---

Y connectors

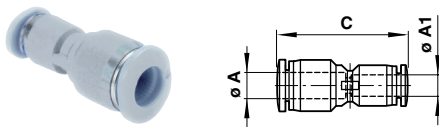
<p><b>Union Y (equal)</b> M0082</p>  <p>Page 5</p>	<p><b>Union Y (unequal)</b> M0082</p>  <p>Page 5</p>
---	---

**Straight union**  
**M0020**



**Equal**

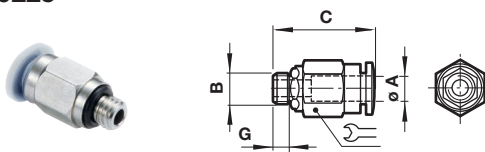
Ø A	C	Model
3	23,5	M00200300
4	26	M00200400
6	26,5	M00200600



**Unequal**

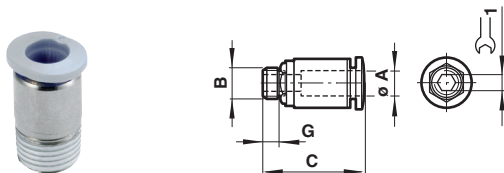
Ø A	A1	C	Model
4	3	24	M00200403
6	3	24	M00200603
6	4	26,5	M00200604

**Straight adaptor (external hex only)**  
**M0125, M0225**



Ø A	B	C	G	⌀	Model
3	M3	17	4	7	M02250303
3	M5	17,5	4,5	8	M02250305
3	M6	18	5	8	M02250306
4	M3	17,5	4	8	M02250403
4	M5	18	4,5	8	M02250405
4	M6	19	5	8	M02250406
4	R1/8	19	6	12	M01250418
6	M5	19,5	4,5	10	M02250605
6	M6	20	5	10	M02250606
6	R1/8	19,5	8	12	M01250618

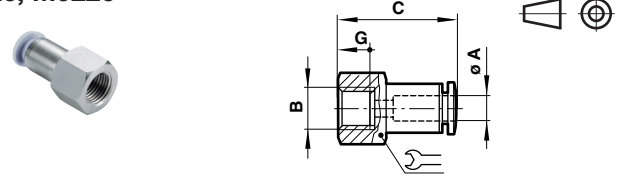
**Straight adaptor (internal hex only)**  
**M012A, M022A**



Ø A	B	C	G	⌀	Model
3	M3	17	4	1,5	M022A0303
3	M5	17,5	4,5	2	M022A0305
3	M6	18	5	2	M022A0306
4	M3	17,5	4	1,5	M022A0403
4	M5	19	4,5	2,5	M022A0405
4	M6	19	5	3	M022A0406
4	R1/8	17,5	8	3	M012A0418
6	M5	19,5	4,5	2,5	M022A0605
6	M6	20	5	3	M022A0606
6	R1/8	19,5	8	2,5	M012A0618

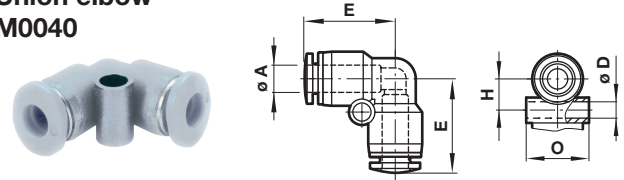
**Straight adaptor (female thread)**  
**M0126, M0226**

Dimensions in mm  
 Projection/First angle



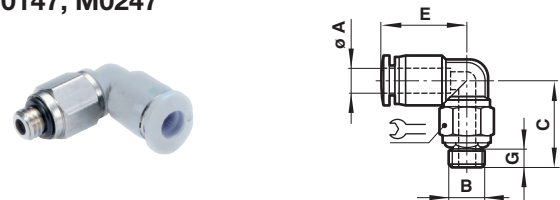
Ø A	B	C	G	⌀	Model
3	M3	17,5	4	8	M02260303
3	M5	19	6	8	M02260305
3	M6	19	6	8	M02260306
4	M3	18	4	8	M02260403
4	M5	19,5	6	8	M02260405
4	M6	19,5	6	8	M02260406
4	Rc1/8	23	8,5	12	M01260418
6	M5	21,5	6	10	M02260605
6	M6	21,5	6	10	M02260606
6	Rc1/8	25,5	8,5	12	M01260618

**Union elbow**  
**M0040**



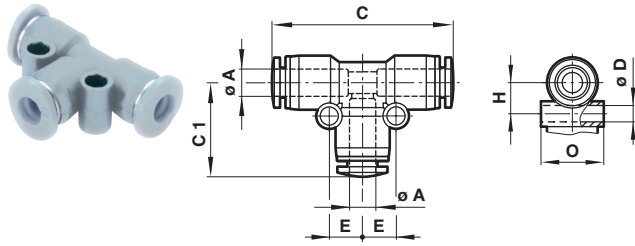
Ø A	Ø D	E	H	O	Model
3	3,2	13,5	5,5	7,5	M00400300
4	3,2	14,5	6	8,5	M00400400
6	3,2	16,5	7	10,5	M00400600

**90° Swivel elbow adaptor**  
**M0147, M0247**



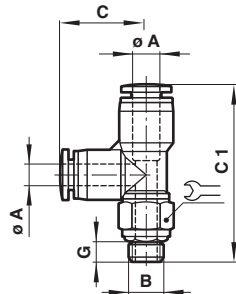
Ø A	B	C	E	G	⌀	Model
3	M3	15	13,5	3	8	M02470303
3	M5	15	13,5	4	8	M02470305
3	M6	16	13,5	4	8	M02470306
4	M3	15	14,5	3	8	M02470403
4	M5	16	14,5	4	8	M02470405
4	M6	16	14,5	4	8	M02470406
4	R1/8	16	14,5	8	10	M01470418
6	M5	17	15,5	3,5	8	M02470605
6	M6	17	15,5	4	8	M02470606
6	R1/8	17	15,5	8	10	M01470618

**Union T  
M0060**



Ø A	C	C1	Ø D	E	H	O	Model
3	26,5	13,5	3,2	5,5	5,5	7,5	M00600300
4	28,5	14,5	3,2	6	6	8,5	M00600400
6	33	16,5	3,2	7	7	10,5	M00600600

**Swivel side tee adaptor  
M0168, M0268**



Ø A	B	C	C1	G	Model
3	M3	13,5	29,5	3	M02680303
3	M5	13,5	30	4	M02680305
3	M6	13,5	30,5	4	M02680306
4	M3	14	30,5	3	M02680403
4	M5	14	31	3,5	M02680405
4	M6	14	31,5	4	M02680406
4	R1/8	14	31,5	6	M01680418
6	M5	16,5	33,5	3,5	M02680605
6	M6	16,5	34	4	M02680606
6	R1/8	16,5	33,5	6	M01680618

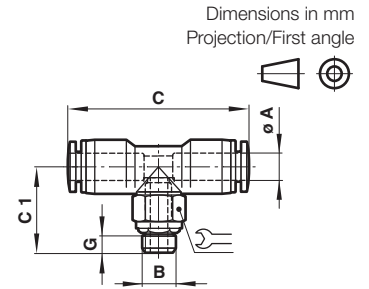
**Warning**

These products are intended for use in industrial compressed air systems only. Do not use these products where pressures and temperatures can exceed those listed under »Technical features/data«.

Before using these products with fluids other than those specified, for non-industrial applications, life-support systems or other applications not within published specifications, consult IMI Precision Engineering, Norgren GmbH.

Through misuse, age, or malfunction, components used in fluid power systems can fail in various modes.

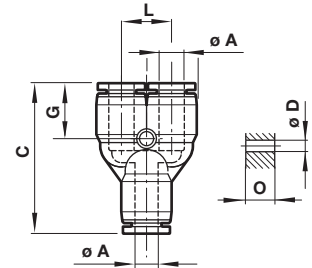
**Swivel tee adaptor  
M0167, M0267**



Dimensions in mm  
Projection/First angle

Ø A	B	C	C1	G	Model
3	M3	25,5	16	3	M02670303
3	M5	29	17	4	M02670305
3	M6	27	17	4	M02670306
4	M3	28,5	16	3	M02670403
4	M5	28,5	17	3,5	M02670405
4	M6	29	17	4	M02670406
4	R1/8	29	18	6	M01670418
6	M5	31	17	3,5	M02670605
6	M6	31	17	4	M02670606
6	R1/8	31	18	6	M01670618

**Union Y  
M0082**

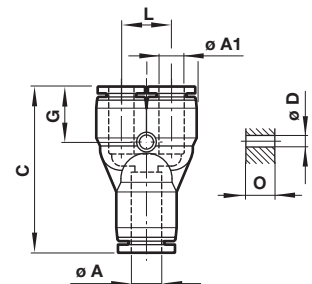


**Equal**

Ø A	C	D	H	L	O	Model
3	27	3,2	11	8	7,5	M00820300
4	28	3,2	11,5	9	8,5	M00820400
6	31	3,2	12	11,5	11	M00820600

**Unequal**

Ø A	Ø A1	C	D	G	L	O	Model
4	3	27,5	3,2	11	8	8,5	M00820403
6	3	28,5	3,2	11	8	11	M00820603
6	4	29	3,2	11,5	9	11	M00820604



The system designer is warned to consider the failure modes of all component parts used in fluid power systems and to provide adequate safeguards to prevent personal injury or damage to equipment in the event of such failure.

System designers must provide a warning to end users in the system instructional manual if protection against a failure mode cannot be adequately provided.

System designers and end users are cautioned to review specific warnings found in instruction sheets packed and shipped with these products.